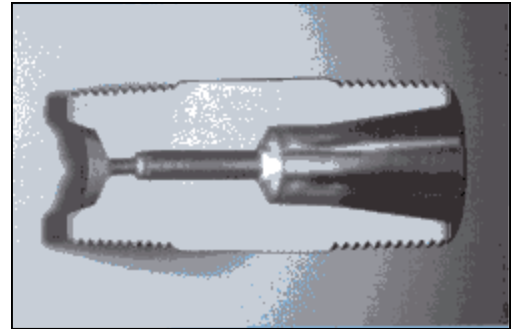




DEI STEAM NOZZLE

Engineered Venturi Steam Trap

The Steam Nozzle is a precision engineered and manufactured venturi steam trap, guaranteed for performance and durability. It is fabricated from solid stainless steel stock, and is resistant to most corrosive atmospheres.* It has no moving parts to wear out, eliminating the need to maintain an inventory of spare parts.



*Please consult the appropriate reference material for chemical compatibility or contact us for additional information.

Technical Data

Material:	Standard	Optional
Steam Nozzle	303 Stainless Steel	316 Stainless Steel
Y Strainer w/ Strainer Basket	303 Stainless Steel	316 Stainless Steel
Ball Valve	303 Stainless Steel	316 Stainless Steel

Operating Pressure: 250 PSIG Maximum
(assumes Saturated Steam 1200 PSIG Maximum socket weld Conditions)

Sizes: 1/2", 3/4" and 1" NPT and BSP threaded,
1" and 1 1/4" socket weld

Capacity: Design capacities exceeding 20,000 lbs/hour.



Steam Nozzle Features

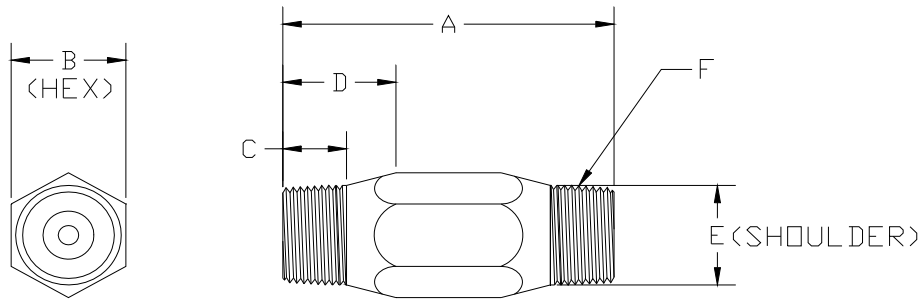
- Manufactured from long lasting stainless steel.
- Guaranteed to last for a minimum of 10 years.
- No moving parts.
- Resistant to most corrosives.
- Compact size makes installation simple and attractive.
- Available in NPT, BSP, and socket weld (male) ends.
- Custom engineered for each application.
- Saves money over standard traps due to durability of components.



Applications

The Steam Nozzle is one of the most efficient traps available today. Its patented design promotes the efficient removal of condensate from the steam system while effectively preventing the escape of live steam. It is suitable for most industrial and commercial applications involving saturated steam. In addition, the Steam Nozzle has no moving parts to wear out. It can be installed in areas that are not accessible during normal operations with the assurance that the trap will perform as designed for over 10 years. We guarantee it.

Dimensions – Threaded Units



Dimensions for Threaded Steam Nozzle

Size	A	B	C	D	E	F
1/2"	2.750"	1.125"	0.660"	1.100"	0.850"	1/2" NPT
3/4"	3.250"	1.125"	0.625"	1.110"	1.036"	3/4" NPT
1"	3.250"	1.375"	1.000"	1.340"	1.336"	1" NPT

Dimensions – Socket Weld Units

1" 1.315" O.D.** (from 1-3/8" stock) x 4" long

1 1/4" 1.660" O.D.** (from 1-3/4" stock) x 5.40" long

** O.D. of units is sized to fit socket weld strainer on the inlet and socket weld flange on the outlet.

Notes

- Standard installation includes a "y"-strainer with strainer basket and ball valve for blowdown upstream of each trap.
- Socket weld units are fabricated from 316 stainless steel due to the limited weldability of 303 stainless steel.
- Applications involving higher pressures than stated are possible. Please contact us for technical assistance.
- Traps for pipe sizes other than those shown are not standard, but may be manufactured to the customer's specifications.